

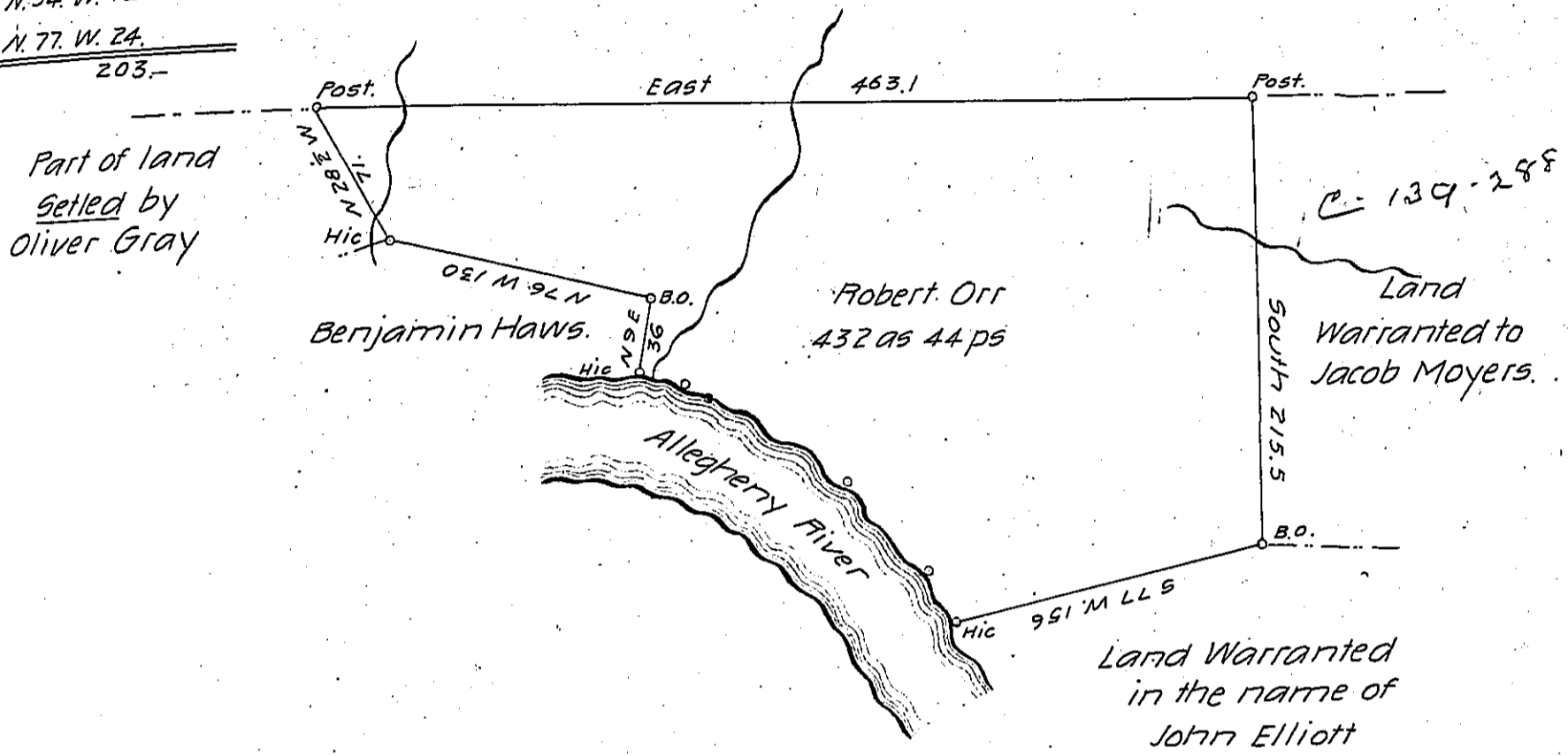
FORM No. 1.

Courses & Distance up the River

- N. 38. W. 30.
- N. 42. W. 60
- N. 58. W. 77
- N. 54. W. 12
- N. 77. W. 24.

203.-

Holland Company's Land



In pursuance of a Warrant dated the 21st day of July 1840.
 Granted to Robert Orr and to me specially directed. Surveyed to
 the same on the 31st day of November 1845, the above described
 tract of land containing four hundred and thirty two acres and for-
 ty four perches and allowance of six per cent &c. Situate in Mad-
 ison Township Armstrong County

J. E. Meredith Special D.S.

To John Laporte Esquier
 Surveyor General.

IN TESTIMONY that the above is a copy of the original remaining on file in
 the Department of Internal Affairs of Pennsylvania, made
 conformably to an Act of Assembly approved the 16th day of
 February, 1833, I have hereunto set my Hand and caused
 the Seal of said Department to be affixed at Harrisburg,
 this twenty-seventh day of April 1906.

Isaac D. Brown
 Secretary of Internal Affairs.